

\* Technical data and features subject to change without notice

### Pumping unit technical data

		HP1808ECX
Max. theoretical output	yd <sup>3</sup> /h m <sup>3</sup> /h	235 180
Max. pressure on concrete	psi bar	1,220 83
Concrete cylinders (diam. x stroke)	inch mm	10"x83" 260 x 2100
Concrete hopper capacity	gal l	159 600
Hydraulic circuit		closed

Total weight less than 101,000 lbs, payload to the user always available.

Carbon fiber technology for less weight, further reach and higher strength.

Small stabilization dimensions for easy placement in all types of job sites.

### Control system

#### Smartronic gold

ASC Advanced stability control  
Auto RPM engine speed adjustment  
Working ramps kit for the pumping unit  
LCD monitor  
Counters  
Pumping unit management  
Diagnostics  
Capsense rear control panel

#### ASC is standard equipment



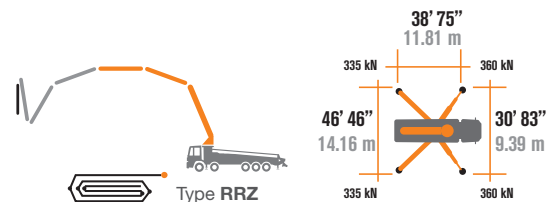
The automatic continuous verification of the center of gravity of the machine guarantees the maximum safety of boom movement and the maximum possible coverage of the job area, even with partial opening of the stabilization.



**MBE**  
Maximum  
boom extension  
control



**Automatic  
RPM  
Management**



### Placing boom technical data

	B6HRZ 60/55
Pipeline diameter	5" (125 mm)
Max. vertical reach	193' 10" (59.1 m)
Max. horizontal distance (from center of slewing axis)	177' 6" (54.1 m)
Net horizontal reach	163' 5" (49.8 m)
Min. unfolding height	46' 7" (14.2 m)
Sections	6
1st section opening angle	90°
2nd, 3rd, 4th section opening angle	180°
5th section opening angle	192°
6th section opening angle	240°
Rotating angle	+/-270°
End hose length	10' (3 m)



# CARBOTECH Series K60H

## Standard equipment

Placing boom 60/55, 6 sections, pipeline diameter 125 mm, "RRZ" folding system

4th, 5th, 6th boom sections made of light and resistant CIFA CARBOTECH composite material. 1st, 2nd and 3rd sections made of high strength steel

Assembly on 4 - 5 axles truck

Fully hydraulic outrigger controls on both sides of the truck

Front "X" style diagonal outriggers with double telescopic opening and swing-out rear outriggers

Safety device on opening inspection hatch

Pumping unit with closed loop HP1808ECX, 10 inch S valve

2 Proportional radio control with 20 mt cable

Double thickness boom straight pipes, in high resistant steel and insert carbide chrome - CIFA LLT Long Life Top

Double thickness concrete pipes on the base, in high resistant steel and insert carbide chrome - CIFA Long Life Pipes

High resistance plate and wear ring with chrome carbide inserts

Remote controlled electric vibrator placed on the concrete hopper gri

Centralized lubrication system for pumping unit

Automatic oil lubrication system for pumping pistons

Additional manual lubrication system for pumping pistons

Rear light on hopper

Accessories for cleaning and pipes washing

Fiber glass hopper covering

Medium pressure water pump (50l/50bar)

## Main Options

High pressure water pump 3.96 GPM / 2175 PSI (15l / 150 bar)

Air compressor for pipeline cleaning

Centralized lubrication system for placing boom

Air pipeline for placing boom

Separated emergency engine kit for independent control of the concrete pumping unit, boom and water pump

Separated emergency engine kit for independent control of the concrete pumping unit, boom and water pump

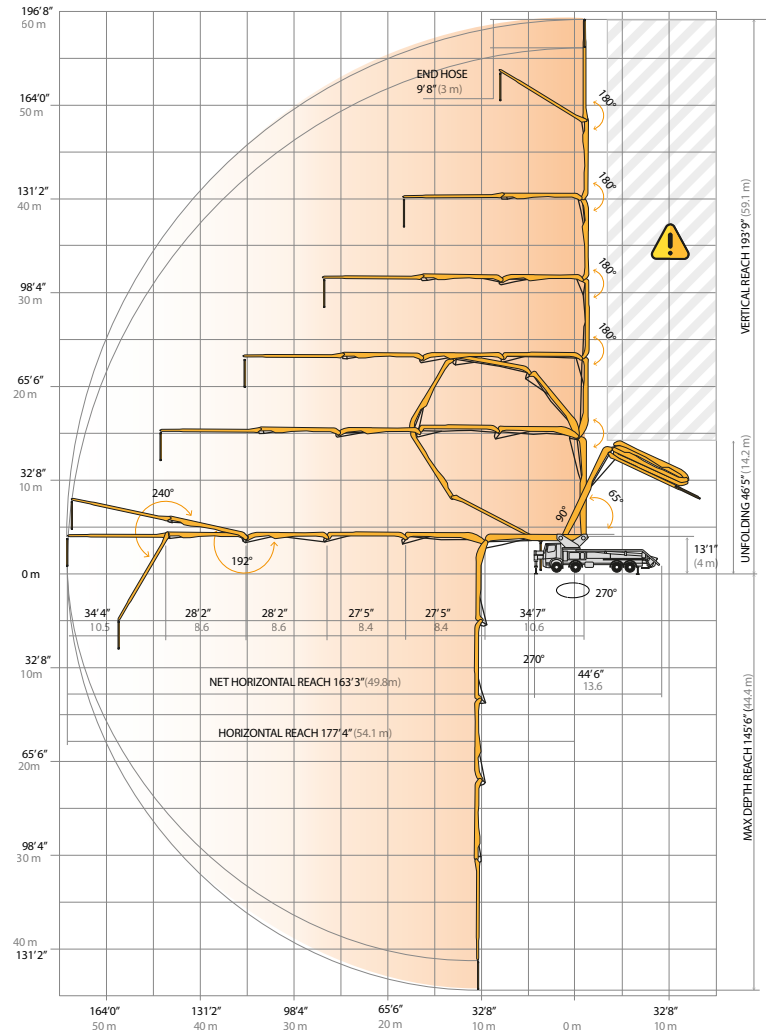
Concrete shut-off valve

Rear camera for easy manoeuvring

Proportional radio control with display

**\*More than 100 pricelist options readily available**

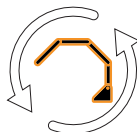
## Placing boom B6HRZ 60/55



**Advanced  
Stability Control  
2.0**



**Antibouncing**



**Boom automatic  
opening and closing**

Carbon Fiber Video



Smartronic Video



CIFA North America, Inc. / 4330 Conifer Court, Union Grove, WI 53182  
Office: +1 (262) 835-4022 / sales-na@cifa.com



na.cifa.com

